

The Bloomingdale School District is Committed to:

Ensuring every child will learn

Treating everyone with honor and respect

Working together to achieve more

Erickson Elementary School



EDUCATING & INSPIRING THE FUTURE

Important Dates

*******Tuesday, August 14, 2018:** Meet the Teacher/Supply Drop-Off 2:30 pm - 3:30 pm*****

Wednesday, August 15, 2018: First Full Day for 1st - 5th grade students

Friday, August 17, 2018: PTO Back to School Family Event 6:00 pm - 8:00 pm

Monday, August 20, 2018: First Full Day for Preschool & Kindergarten

Thursday, August 30, 2018: Curriculum Night 6:30 pm - 8:00 pm

Meet the Teacher/Supply Drop-Off: Erickson Elementary School will be hosting a Meet the Teacher/Supply Drop-Off event tomorrow from 2:30 pm - 3:30 pm for **Kindergarten - 5th grade students**. This is an opportunity for you and your child to come to Erickson before school begins to 1) meet your teacher and 2) drop-off your child's classroom supplies. This will hopefully provide an easier transition for the first day of school.

First Day of School: The first full day of school is Wednesday, August 15, 2018, for students in first - fifth grade. School hours are from 8:40 am - 3:30 pm. Students can be dropped off at Erickson anytime after 8:25 am.

Kindergarten & Preschool students start school on Monday, August 20, 2018. The lunch period is from 12:00 pm - 12:50 pm. 1st-3rd grade eat from 12:00 pm - 12:25 pm. 4th & 5th grade eat from 12:25 pm - 12:50 pm

PTO Back to School Family Event: Mark your calendar for the PTO Back to School Family Event scheduled for this Friday from 6:00 pm - 8:00 pm.

Erickson Pick-Up & Drop-Off Procedures: [Click here](#) for more information regarding pick-up and drop-off procedures. *The front parking lot is reserved for buses. Parents should utilize the side parking lot. Preschool students are able to use the front parking lot for mid morning pick-up and afternoon pick-up.*

Bus Routes: Please be patient the first week of school as bus drivers learn their routes. Students should be outside ready for the bus at least 5-10 minutes prior to arrival time. [Click here](#) to view up-to-date bus routes.

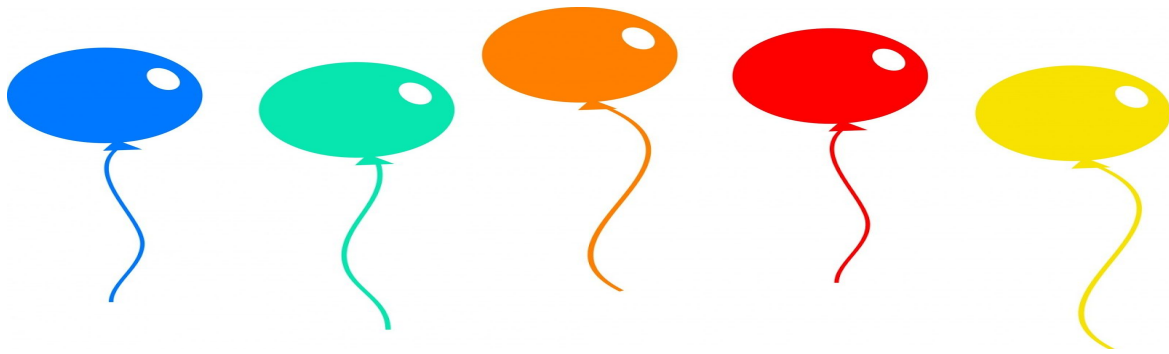
Erickson Bus Remind Updates: [Click here](#) to join the Erickson Bus Remind Update program. Erickson will use the Remind program to keep parents informed of bus changes.

Staff Information: Erickson Elementary School would like to welcome the following new & returning staff members: Ms. Iuorio (LASSO Teacher), Ms. Maldonado (LASSO paraprofessional), Ms. Wagowski (LASSO paraprofessional), Ms. Lee (speech), Ms. Naples (first grade teacher), Ms. Bending (first grade paraprofessional), Mrs. McCluskey (second grade paraprofessional), Ms. Santarromana (fourth grade paraprofessional), Mrs. Kurpiel (social worker), Mrs. Hunn (preschool paraprofessional), Mrs. Laba (preschool paraprofessional), Mrs. Evans (fifth grade teacher) Mrs. Spagnoli (fifth grade paraprofessional).

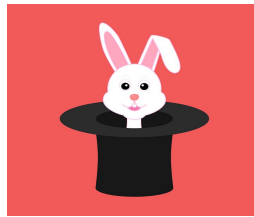
*****Lunch Time Schedule*****

First, Second, & Third Grade
12:00 am - 12:25 pm (LUNCH)
12:25 pm - 12:50 pm (RECESS)

Fourth & Fifth Grade
12:00 pm - 12:25 pm (RECESS)
12:25 pm - 12:50 pm (LUNCH)



*Erickson Elementary
Back to School Magical Event
Join Us Friday, August 17 from 6 pm to 8 pm*



This magical fun filled evening will include a complimentary magic show.

The magic show will begin promptly at 6:30.

Guests will also be able to enjoy a photo booth and a bounce house.

Pizza, popcorn, candy, water & cotton candy will be available for purchase.



A Silent Auction will be available with great baskets and many new items including Cubs Jerseys. We will have the always popular Principal for the day and ride to school in a Police car or Fire Truck.

Admission-\$10 per kid & includes magic show, photo booth, bounce house

***EDUCATING AND
INSPIRING THE FUTURE***

Erickson Elementary School

SOAR LIKE AN EAGLE





Morning and Afternoon Pick-Up Procedures

Parking Lot Procedures

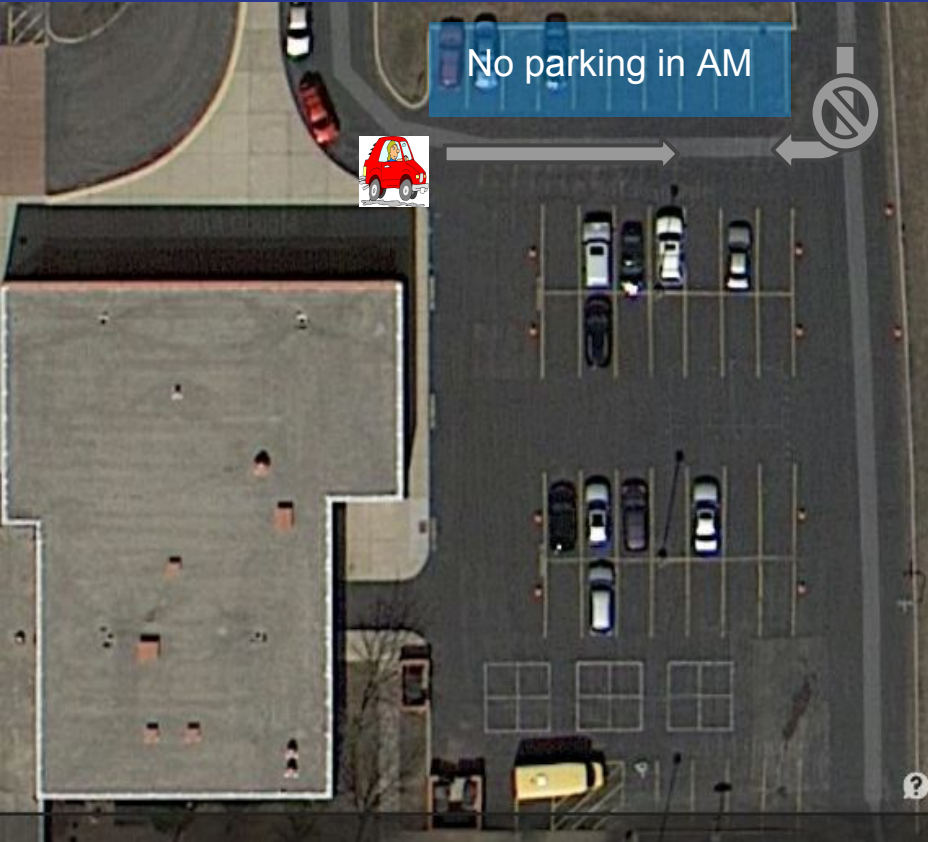
Front Parking lot is for Buses Only
Drop off & pick up by parents after 8:45 am & 4:00 pm

One-Way
Do not enter during AM or after 3:30 pm

Cars should enter through the park district parking lot and proceed to the pick-up/drop off circle or park in designated parking spots



Parking Lot Procedures



Refrain from making a right turn into the first parking row. (Parents are exiting from the circle drive)

Do not park in the first row (next to the grass) during AM pick-up to reduce the chance of crossing traffic

Pull to the very end of the circle drive to speed up the pick-up & drop-off procedures

If there are no parking spots left in the parking lot at dismissal, parents are asked to return to the pick-up line

After 3:30 pm, parents should stay in the pick-up line and not enter the parking lot

Parking Lot Procedures

The front parking lot is reserved for bus drop off & pick up

Parents can Drop off & Pick-Up students in the front parking lot between 8:45 am - 3:15 pm and after 4:00 pm

Students being picked up or dropped off during AM & PM dismissal should do so in the circle drive or visitor parking lot

While visiting the school, parents are required to park in designated parking spaces in the visitor/staff parking lot

Students are not allowed to walk in the parking lot without an adult

Cars should enter through the park district parking lot and proceed to the pick-up/drop off circle or park in designated parking spots

Morning Line Up

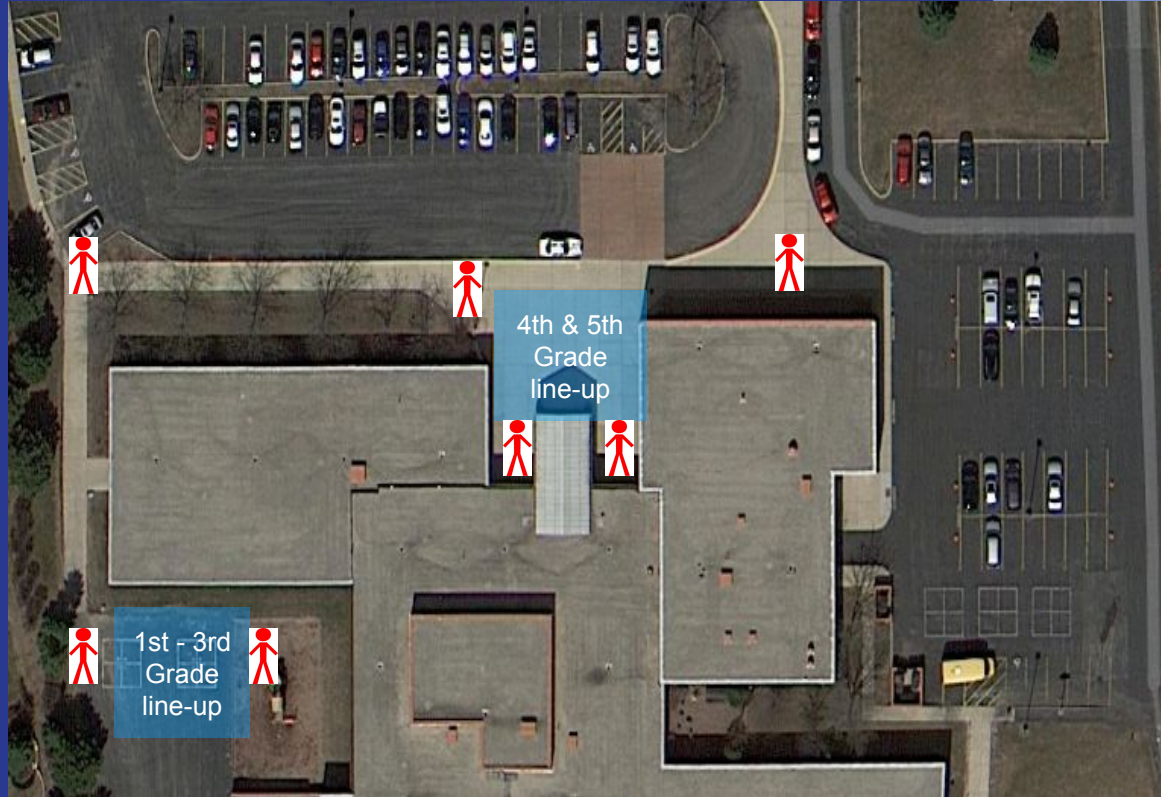
Students can be dropped off anytime after 8:25 am

4th and 5th grade students line-up in the front of the building

1st-3rd grade students line-up on the side of the building

Kindergarten students line-up inside the building

 **Location of Erickson Staff**



Morning Line-Up RAIN/COLD WEATHER

Rain & Cold Weather Drop-off & Pick-up Procedures

Students have indoor line-up on days when it is raining outside or the temperature is below 10 degrees

First-Fifth grade students will enter the building through the front doors

First – Third grade students will line-up outside their classrooms

Fourth & Fifth grade students will line up in the lobby

